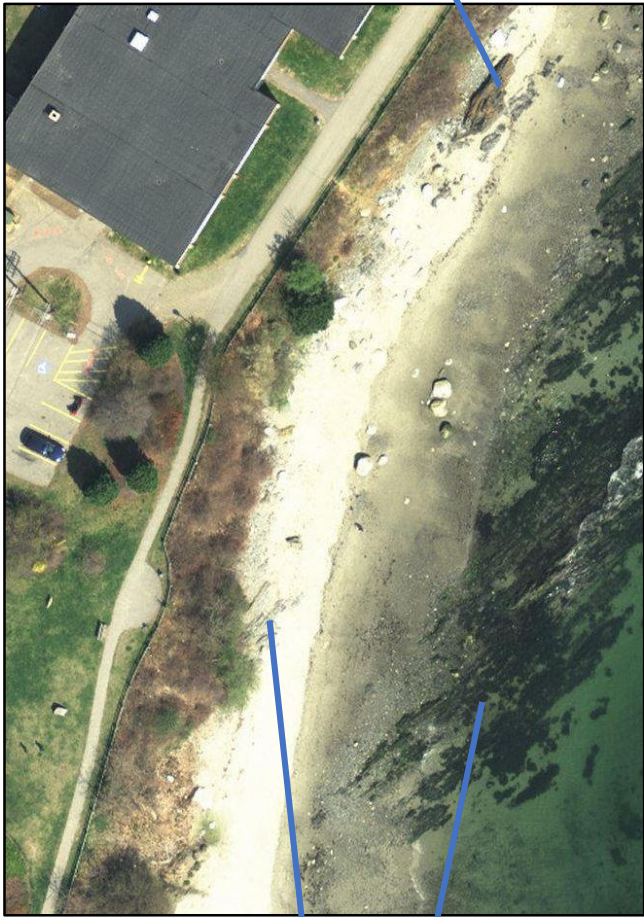


Hussey, Arthur M., II, 2003, Bedrock geology of the Portland East quadrangle, Maine: Maine Geological Survey, Open-File Map 03-90, scale 1:24,000.

Southern area

Odi – Diamond Island Formation



Osc – Scarborough Formation

Northern area



Odi – Diamond Island Formation

Osp – Spring Point Formation  
(continues to the northeast)